

## Fine-Tune Resistance In Precision Circuits Without Costly Components

### Highlights

- In lieu of trim pots, you can use networks fixed-resistor triads.
- Here is code for an resistor-selection algorithm.
- The technique was developed at JPL.

By W. Stephen Woodward  
May 05, 2010

The “trim pot” is the standard solution to the analog designer’s occasional need to fine-tune a resistance in a precision circuit. But this old standby isn’t always available. For example, in some aerospace applications such as planetary exploration, mechanical trimmers may be unsuited to the vibration, acceleration, vacuum, temperature extremes, and ultra-high-reliability requirements of space flight.

An obvious workaround would be to temporarily install trimmers and use them to calibrate circuit function in the usual way. You could then remove, measure, and replace the trimmers with flight-qualified fixed resistors that match the measured selected-in-test (SIT) resistances in final assembly.

There’s a catch, however. The same costly and time-consuming screening, testing, and documentation requirements of space flight component qualification that excluded trim pots apply to fixed resistors, too. Consequently, each separate resistor value included in any flight hardware assembly represents a very expensive and long lead-time line item.

Budgetary and time restrictions, therefore, place Draconian limits on the number of different resistors that can be stocked or ordered to implement SIT resistances. So, it can be impractical to directly replace measured SIT resistances with matched-value flight-qualified fixed resistors.

Fortunately, a more cost-effective alternative exists. The scheme involves replacing trimmers not with single, fixed resistors, but with networks consisting of triads of fixed resistors. This technique was used in the Tunable-Diode Laser Spectrometer (TLS) at the Jet Propulsion Laboratory at Caltech in Pasadena, Calif. The TLS is part of the Sample Analysis on Mars science instrumentation package of the Mars Science Laboratory rover.

The resistors in each triad are selected from a relatively small—and, thus, more economical—assortment (for example, 70) of fixed resistors plus open ( $10^{12} \Omega$ ) and short ( $10^{-3} \Omega$ ) values. The key to the technique is an exhaustive search algorithm that chooses the resistors for the triad from the assortment so the triad can create the equivalent (Thévenin) resistance desired within about 0.1% of the target value over more than five decades (from less than  $10 \Omega$  to more than  $1 \text{ M}\Omega$ ).

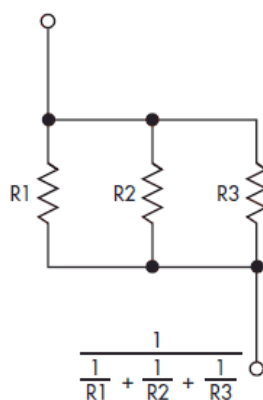
Designers can use three different **network topologies** (*see the figure*), depending on the general range of the  $R_{SIT}$  resistance: parallel for  $R_{SIT} < 500 \Omega$ , series for  $R_{SIT} > 25 \text{ k}\Omega$ , and series/parallel ( $500 \Omega < R_{SIT} < 25 \text{ k}\Omega$ ). A simple and small but exhaustive (brute force =  $N^3$ ) search computer algorithm chooses the best-fit resistor values from the supplied inventory of resistor values. [The table](#) shows a typical assortment of 70 resistors.

[Download Code File \(File Size: 32 kbytes\)](#)

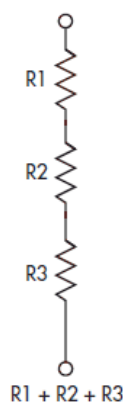
TYPICAL RESISTOR ASSORTMENT				
0.001 (short)				
10	100	1000	10,000	100,000
12.1	121	1210	12,100	121,000
15	150	1500	15,000	150,000
18.2	182	1820	18,200	182,000
22.1	221	2210	22,100	221,000
27.1	271	2710	27,100	271,000
33.2	332	3320	33,200	332,000
38.8	388	3880	38,800	388,000
47	470	4700	47,000	470,000
51.1	511	5110	51,100	511,000
56.2	562	5620	56,200	562,000
68.1	681	6810	68,100	681,000
75	750	7500	75,000	750,000
81.6	816	8160	81,600	816,000
				$10^{12}$ (open)

$R_{SIT}$  equivalents

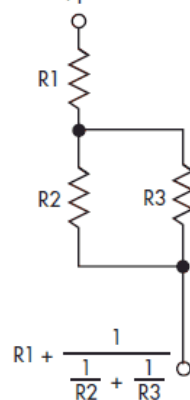
Parallel



Series



Series/parallel



By using one of these three-resistor network topologies, designers can replace a selected-in-test resistance from a relatively economical assortment of qualified resistors. A computer algorithm chooses  $R1$ ,  $R2$ , and  $R3$ .

Copyright © 2010 Penton Media, Inc., All rights reserved.